

CONTINUOUS FALL PROTECTION WHEN CLIMBING FIXED LADDERS

Söll™ Vi-Go Vertical Cable System



Honeywell
MILLER®

SÖLL VI-GO VERTICAL CABLE SYSTEM

The Söll Vi-Go Vertical Cable system provides the ultimate safety with continuous fall protection when climbing fixed ladders.

BENEFITS OF THE SYSTEM

- Accommodates up to 4 workers at a time
- Includes multiple components to perfectly adapt to the ladder
- Available with 10mm or 8mm cable, galvanized or stainless steel components
- Meets EN, ANSI, OSHA and CSA standards (depending on the configuration)
- Söll VC500 Fall Arrester glides easily through intermediate brackets, uninterrupted: hands and feet are free for climbing

AREAS OF USE

- Wind Turbines
- Telecommunications
- Utilities
- Industrial/Manufacturing Facilities
- Drilling Rigs/Platforms
- Shipbuilding
- Crane Installation
- Confined Spaces



SÖLL VC500 FALL ARRESTERS

VC570 THE CHOICE FOR GLOBAL, DEMANDING USERS



VC510 STURDY AND EFFECTIVE FALL ARRESTER

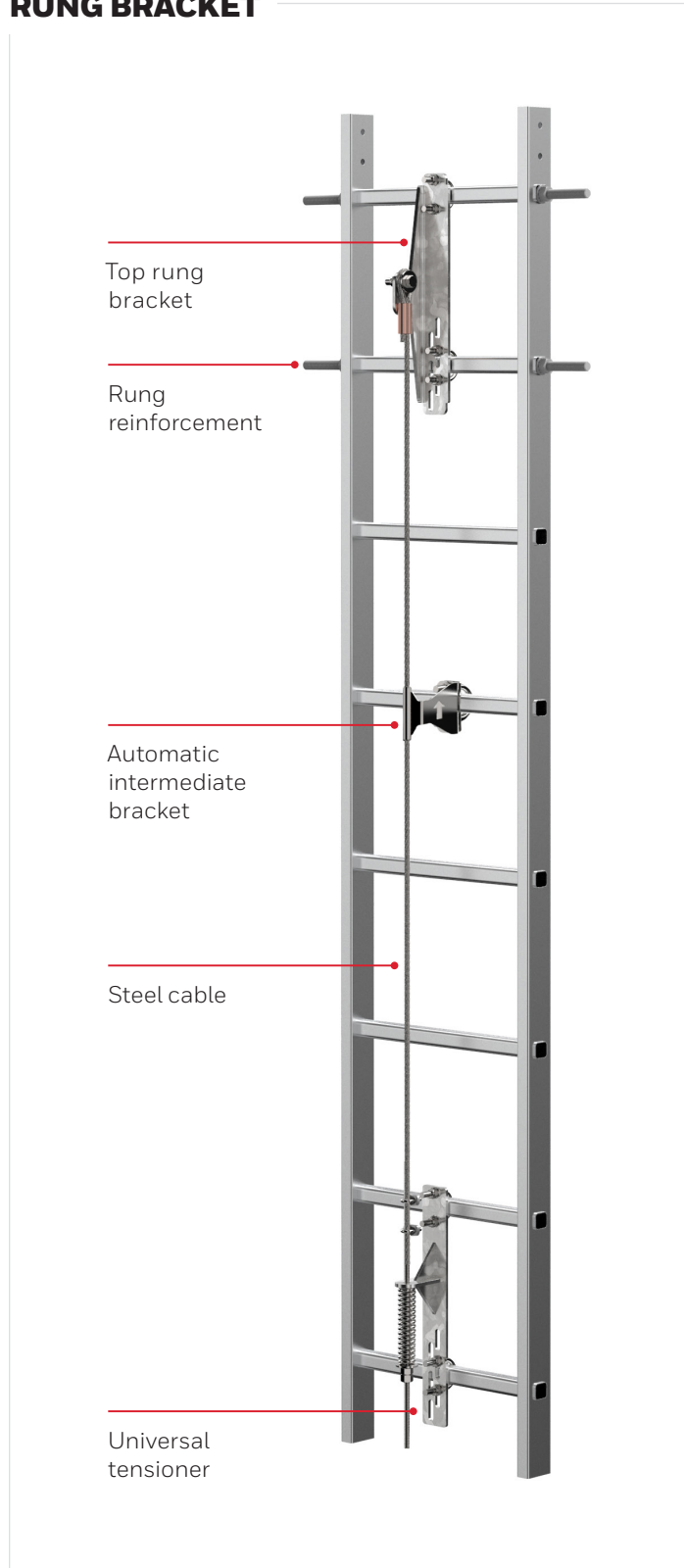


SÖLL VC500 FALL ARRESTERS

	MODEL	VC510	VC570
Compatibility	8mm and 10mm cables, Galvanized and Stainless Steel	•	•
	Working temperatures -40°C to +50°C	•	•
	User weight: 50 to 140 kg	•	•
Comfort	Automatic pass-through intermediate brackets for a smooth and uninterrupted climb, up and down	•	•
	Intuitive and user-friendly opening mechanism for a fast and error-free connection to the cable	•	•
	Ergonomic one-hand opening mechanism and attachment to the cable		●
	Swivel carabiner for a great flexibility of movement and full compatibility with vertical and horizontal D-Rings on the harness		●
Safety	Tri-lock carabiner to withstand 45kN and 16kN gate	•	•
	Integrated mechanism to prevent incorrect attachment to the cable	•	•
	Double-action opening mechanism to prevent accidental release from the cable	•	•
	Visual fall indicator to reveal whether the shock absorber has been deployed	•	•
	Redundant gravity brake for extra safety		●
Durability	Polyamide, aluminium and stainless-steel construction, providing exceptional corrosion resistance	•	•
	Stainless steel shock absorber to increase product life and reduce cost of ownership when compared with textile absorbing elements	•	•
	Patented cable edge protection design to reduce the risk of damage to the cable in the case of fall	•	•
Certifications	EN 353-1:2014+A1:2017	•	•
	OSHA	•	•
	ANSI A14.3	•	
	ANSI Z359.16		●
	CSA Z259.2.5		●
Basic data	Skü number	FPH_VC510	FPH_VC570
	Weight	1.16 kg	1.42 kg
	Length	240 mm	251 mm
	Width	44 mm	51 mm
	Height	119 mm	119 mm
	Integrated RFID tag		●

SÖLL VI-GO SYSTEM CONFIGURATIONS

SYSTEM WITH TOP RUNG BRACKET



SYSTEM WITH PLATFORM EXTENSION



SÖLL VI-GO SYSTEM COMPONENTS



FPH_24807
Galvanized Steel

FPH_24806
Stainless Steel

Rung Clamp

Cable fixing clamp fastened directly to ladder rungs using elongated holes to suit different ladder rung distances. For rung profiles Ø27-38mm

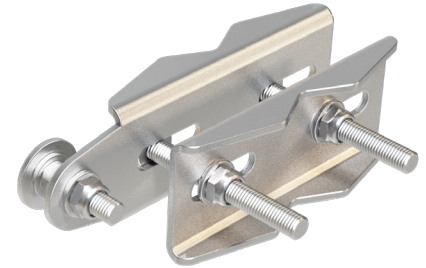


FPH_25001
Galvanized Steel

FPH_25002
Stainless Steel

Rung Clamp

Cable fixing clamp fastened directly to ladder rungs using elongated holes to suit different ladder rung distances. For rung profiles Ø18-26mm



FPH_24815
Galvanized Steel

FPH_24814
Stainless Steel

Universal Beam Bracket

Cable fixing clamp for fastening to pipe structures and angular or flat steel profiles.

Integrated anchor point for safe transition to the platform



FPH_25051
Galvanized Steel

FPH_25846
Stainless Steel

Platform Extension

For applications where cables need to extend above the top of the ladder to allow safe access to platform.



FPH_30168
Galvanized Steel

FPH_30169
Stainless Steel

Universal Tensioner

Cable tensioner with integrated rung bracket and tension indicator for quick installation.

**The image represents the galvanized steel version. Please check the user instructions for additional details.*



FPH_24843
Galvanized Steel

FPH_24841
Stainless Steel

8mm Steel Cable

Galvanized steel or stainless cable of 7x19 strand.

SÖLL VI-GO SYSTEM COMPONENTS

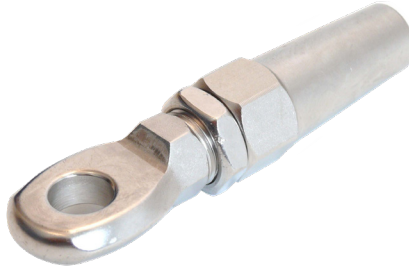


FPH_24845
Galvanized Steel

FPH_24846
Stainless Steel

Cable Swage

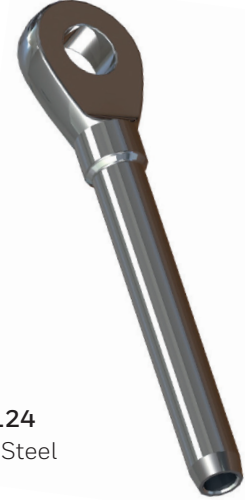
Cost effective cable terminal that helps reduce installation time.



FPH_24851
Stainless Steel

Swageless Terminal

Cable terminal is plugged into the wire rope ends for quick installation.



FPH_25124
Stainless Steel

Cable End Swage

Cost effective cable terminal that is factory pre-assembled.

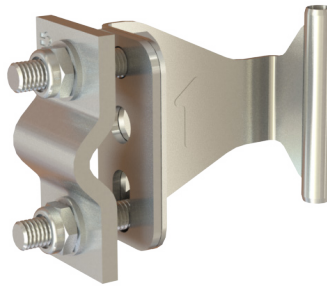


FPH_24840 (For 8 mm cable)
Stainless steel

FPH_25202 (For 10 mm cable)
Stainless Steel

Automatic Intermediate Bracket

Fitted to ladder rung to hold the cable in place. For rung profiles Ø27-38mm.

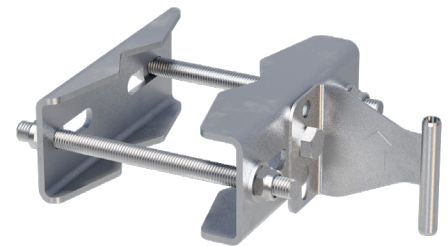


FPH_25000 (For 8 mm cable)
Stainless steel

FPH_26243 (For 10 mm cable)
Stainless Steel

Automatic Intermediate Bracket

Fitted to ladder rung to hold the cable in place. For rung profiles Ø18-26mm

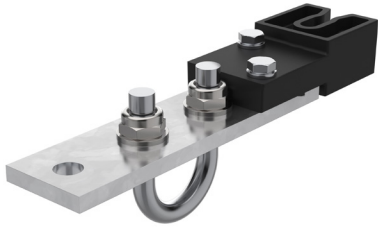


FPH_25860 (For 8 mm cable)
Stainless Steel

Automatic Intermediate Bracket

Fitted to ladder rung to hold the cable in place. For fastening to pipe structures and angular or flat steel profiles

SÖLL VI-GO SYSTEM COMPONENTS



FPH_24838
Stainless steel/plastic

Manual Intermediate Bracket

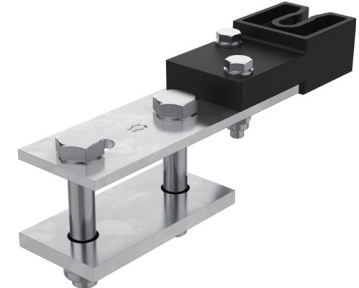
Fitted to ladder rung to hold the cable in place. For rung profiles Ø27-38mm.



FPH_25388
Stainless steel/plastic

Manual Intermediate Bracket

Fitted to ladder rung to hold the cable in place. For rung profiles Ø18-26mm.



FPH_25994
Stainless steel/plastic

Manual Intermediate Bracket

Fitted to ladder rung to hold the cable in place. For rectangular ladder rungs.



FPH_25121
Stainless steel

Rung Reinforcement

For reinforcement of hollow rungs

More components, to fit the Vi-Go ladder system to virtually any structure, are available on demand. Contact the Honeywell Söll Engineered Support team for guidance at scs-hof@honeywell.com.

For more information

www.sps.honeywell.com

Honeywell Fall Protection Deutschland

Seligenweg 10, D-95028 Hof
Germany

Email: scs-hof@honeywell.com

Tel: +49 (0) 928 183 020

www.honeywell.com